

FOLDWAY SHUTTERS AND NOT RETURN MANUAL OPENING



SAS Ø 140÷600 mm

TECHNICAL DATA

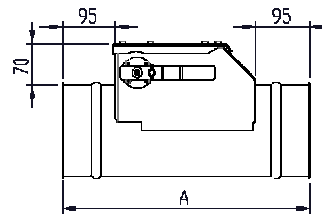
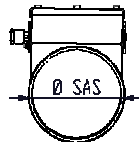
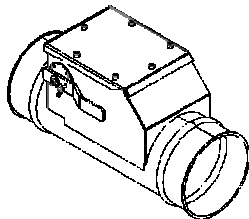
Galvanized or stainless steel.

The foldway shutters have the value to leave completely free the section of passage in open position.

The pin rotates on brass or bearings (see table).Maximum air speed: 35 m/s.

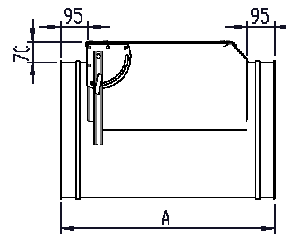
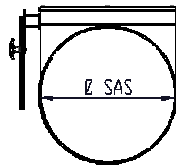
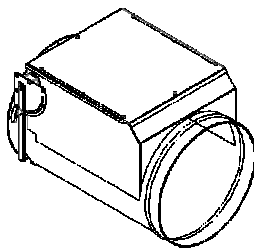
ØSAS (mm)	Ø PIN (mm)	DIAPHRAGM THICKNESS (mm)	BODY THICKNESS (mm)	ROTATION ON	LENGHT SECTOR LEVER (mm)
140÷180	16	3	1,5	brass	175
200÷280	16		1,5		330
300÷480	16		2		330
500÷560	20	4	3	bearings	340
580	25		3		540
600	30		3		540

SAS Ø140÷180



ØSAS (mm)	A(mm)
150	430
200	480
250	530
300	580
350	630
400	680
450	730
500	780
550	830
600	880

SAS Ø200÷480



SAS Ø500÷600

